

GALDERMA

# SCULPTRA®

## PATIENT INFORMATION



This leaflet is only supplied to patients  
undergoing treatment with Sculptra®

  
SCULPTRA®

# COLLAGEN IS THE KEY TO FIRMER SKIN

COLLAGEN IS ONE OF THE MOST ABUNDANT PROTEINS IN YOUR BODY, MAKING UP AROUND 75% OF YOUR SKIN<sup>1</sup>

Among the various collagen types, type 1 and type 3 are the most prevalent in the skin:<sup>2</sup>

- Collagen type 1 is the main structural component of the skin<sup>3</sup>
- Collagen type 3 plays a role in the processes of healing and repair<sup>3</sup>

## WITH AGE, YOUR COLLAGEN LEVELS RAPIDLY DEplete<sup>4,5</sup>

Throughout adult life, about 1% of collagen is lost per year<sup>5</sup>

BY AGE 35



Up to 15% of collagen loss<sup>5</sup>

BY AGE 45



Up to 25% of collagen loss<sup>5</sup>

BY AGE 55



Up to 35% of collagen loss<sup>5</sup>

COLLAGEN HELPS IN MAINTAINING YOUR SKIN'S SHAPE AND FIRMNESS<sup>2,4</sup>

Collagen provides vital support and structure to the skin. As it diminishes, lines and wrinkles begin to form. The effects of aging on facial fat pads also influence the structure and volume of the face which can cause the skin to sag and lose shape.

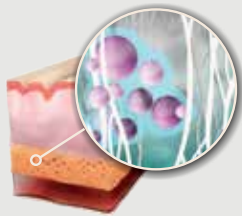


- Skin loses elasticity
- Skin retains less moisture

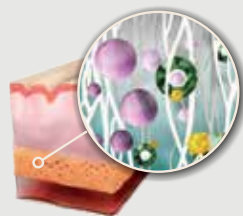
# HOW SCULPTRA® WORKS TO ADDRESS THE UNDERLYING CAUSE OF FACIAL AGING

Sculptra® is an injectable collagen biostimulator made from Poly-lactic acid (PLLA)\*, a fully absorbed polymer which works deep into the skin to improve its inner structure.<sup>6-9</sup>

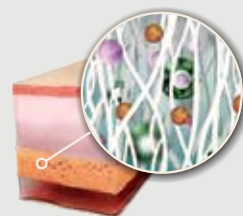
**PLLA MICROPARTICLES WORK DEEP WITHIN THE SKIN TO STIMULATE THE NATURAL REPLACEMENT OF LOST COLLAGEN<sup>6-9</sup>**



PLLA microparticles are injected deep into the skin



PLLA microparticles stimulate the replacement of lost collagen



Over time, collagen production rebuilds the skin's structure

**BY STIMULATING THE PRODUCTION OF COLLAGEN TYPE 1, SCULPTRA® CAN RESTORE SKIN FIRMNESS, QUALITY AND VOLUME<sup>6-9</sup>**



# DUE TO SCULPTRA® STIMULATING NEW COLLAGEN IN THE SKIN IT CAN IMPROVE<sup>#,10</sup>

SKIN RADIANCE



SKIN SMOOTHNESS



SKIN ELASTICITY



PIGMENT UNIFORMITY



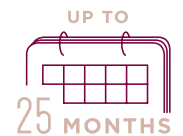
REDNESS INDEX AND PORE SIZE



## HOW SOON WILL RESULTS BE NOTICEABLE & HOW LONG WILL THE TREATMENT LAST?

### HOW LONG WILL THE TREATMENT LAST?

- Results obtained with Sculptra® treatment are gradual.
- Changes are subtle, and usually aren't apparent immediately after the first treatment.
- Improvements may last for up to 25 months after the initial treatment.<sup>11</sup>



### HOW MANY TREATMENT SESSIONS ARE REQUIRED?

- Typically 2 or 3 treatments every 4-6 weeks.



### GRADUAL EFFECTS<sup>7</sup>

- Results develop gradually as collagen production is stimulated and skin appearance improves.

<sup>#</sup>Note that individual results on clinically proven benefits may vary.

# TEST THE FIRMNESS OF YOUR SKIN

AS YOU AGE, YOUR SKIN WILL DEVELOP WRINKLES, SAG AND LOSE ITS ABILITY TO SNAP BACK AFTER STRETCHING

One simple way to assess if your skin has lost its elasticity and firmness is by pinching your skin.



- Does your skin feel looser?
- Does it take longer for the skin to bounce back?

ARE YOU IN YOUR 40S AND LOOKING FOR A SUBTLE TREATMENT, ABLE TO OFFER GRADUAL, NATURAL AND LONG-LASTING BENEFITS?

ELISSA, 49\*



Before



45 days after 2<sup>nd</sup> session



25 months after treatment

\*Actual patient. Treated with 5 vials of Sculptra®, 3 sessions.

# VISIBLE RESULTS WITH SCULPTRA®

CARA, 42\*



Before



8 months after treatment

\*Actual patient. Treated with 3 vials of Sculptra®, 3 sessions.

STEWARD, 54†



Before



7 months after treatment

†Actual patient. Treated with 5 vials of Sculptra®, 3 sessions.

Note that individual patient results may vary.

© Dr Linda Eve. Pictures are reproduced with permission.



# SCULPTRA®



**REFERENCES:** 1. Shoulders MD, Raines RT. Collagen Structure and Stability. *Annu Rev Biochem*. 2009;**78**:929-958. 2. Aziz J, et al. Molecular Mechanisms of Stress-Responsive Changes in Collagen and Elastin Networks in Skin. *Skin Pharmacol Physiol*. 2016;**29**(4):190-203. 3. Wu J, et al. Type III Collagen, a Fibril Network Modifier in Articular Cartilage". *J Biol Chem*. 2010;**285**(24):18537-18544. 4. Farage MA, et al. Characteristics of the Aging Skin. *Adv Wound Care (New Rochelle)*. 2013;**2**(1):5-10. 5. Shuster S, et al. The influence of age and sex on skin thickness, skin collagen and density. *Br J Dermatol*. 1975;**93**:639-643. 6. Goldberg D, et al. Single-Arm Study for the Characterization of Human Tissue Response to Injectable Poly-L-Lactic Acid. *Dermatol Surg*. 2013;**39**(6):915-922. 7. Sculptra. IFU, South Africa, December 2020. 8 Lacombe V. Sculptra: A Stimulatory Filler. *Facial Plast Surg*. 2009;**25**(2):95-99. 9. Mest DR, Humble G. Safety and Efficacy of Poly-L-lactic Acid Injections in Persons with HIV-Associated Lipodystrophy: The US Experience. *Dermatol Surg*. 2006;**32**(11):1336-1345. 10. Bohnert K, et al. Randomized, Controlled, Multicentered, Double-Blind Investigation of Injectable Poly-L-Lactic Acid for Improving Skin Quality. *Plast Reconstr Surg*. 2019;**45**(5):718-724. 11. Narins RS, et al. A randomized study of the efficacy and safety of injectable poly-L-lactic acid versus human-based collagen implant in the treatment of nasolabial fold wrinkles. *J Am Acad Dermatol*. 2010;**62**(3):448-462.

#### ABBREVIATIONS:

PLLA = Poly-L-lactic acid.

*Sculptra*® and Galderma are registered trademarks.

Full product information on the *Sculptra*® available from Galderma Laboratories South Africa (Pty) Ltd., Co. Reg. No.: 1996/00031/07, PO Box 71150, Bryanston, 2021. Tel.: (011) 706 2339. [www.galderma.com](http://www.galderma.com) ZA-SCU-2100022. Final approval date: 09/12/2021

## GALDERMA