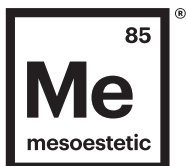


mesoestetic®



home performance solutions



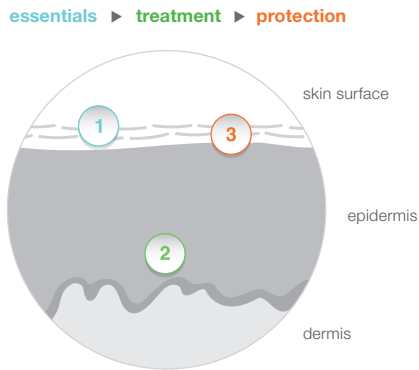
the element
for skincare
experts

mesoestetic.co.za

know your skin type?

How you care for your skin is utterly dependent on the type of skin you have. Take a look at how to determine your skin type to find the products best suited for you.

Skin type may be influenced by genetics, however, it may vary according to many internal and external factors.



This material provides general advice on the skin types for which each product is recommended. Nonetheless, preferences and the conditions to which the skin is exposed, together with a prior diagnosis, are key to adapting the prescription to each case.



Acne-prone and oily skin

Characterised by excess sebum production, enlarged pores, rough texture.



Normal and combination skin

Can be both oily and dry skin, aggravated by atmospheric conditions.



Dry skin

Characterised by a lack of moisture and loss of tissue elasticity.



Sensitive or sensitised skin

Characterised by a weak skin barrier, sensitive to touch, increased redness, localised erythema and dryness.



Couperose-prone skin

Characterised by redness, dryness and sensitivity as a result of dilated blood vessels and a decrease in skin elasticity.



Skin with hyperpigmentation

Skin with increased localised melanin production, causing various kinds of pigmentation.



All Skin Types

Products suitable for all skin types due to the versatility of their benefits.



Post-procedure

Products recommended after a treatment to soothe, recover and boost the effects of the protocol applied by the professional.

Cleansing Solutions



hydracream fusion

Balancing, anti-pollution cleansing facial cream-oil for dry and sensitive skins.

Provides nourishment and hydration to the skin, leaving it beautifully smooth.

INDICATED for dry and dehydrated skin.

Excellent as a make-up remover.

Use: daily ☀️ 🌙 **D** **S**



brightening foam

Balancing and anti-pollution cleansing gel-foam with added AHA's to provide a brightening and renewing action for normal and combination skins.

A low concentration of glycolic and lactic acid improves skin texture and brightens the skin.

INDICATED for dull skin prone to hyperpigmentation.

Use: daily ☀️ 🌙 **N**



purifying mousse

Balancing, anti-pollution cleansing facial foam. Purifies the skin, unclogging blocked pores and improving the appearance of large pores.

INDICATED for oily and acne prone skin.

Use: daily ☀️ 🌙 **A**



hydratonic mist

Balancing, anti-pollution, moisturising facial mist toner.

Completes the cleansing routine by removing excess cleanser from the skin. It balances the pH of the acid mantle and enhances the skin microbiome.

INDICATED for all skin types.

Use: daily ☀️ 🌙 **All**

Cleansing Solutions



micellar biphasic

A biphasic make-up remover.

Combines micelles with a plant oil rich in omega-6, to trap and gently remove dirt and make-up, even waterproof, with no oily residue.

INDICATED for highly reactive, sensitive skin or as a fast and convenient water free cleansing method.

Great for travelling.

Use: daily ☀️ 🌙 **All**



Moisturising Solutions



ha densimatrix

Daily treatment for all skin types and especially good for aging concerns and dehydration.

Enhances the production of collagen and elastin.
Reduces excessive water loss from the skin.

Use: daily ☀️ 🌙 All D Post



hydra-vital light

Refreshing moisture cream gel.

Ideal for normal, oily and combination skin.

Can be used with our acne solutions as a day-time moisturiser.

Great for anyone looking for a lightweight moisturiser.

Use: daily ☀️ 🌙 All



hydra-vital factor k

Ultra moisturising and nourishing cream. Provides a barrier against external aggressions and reduces water loss from the skin. Provides a rich and comforting effect for very dry skin.

Use: daily ☀️ 🌙 D S



hydravital mask

An intensive moisturising mask.

Rich in hyaluronic acid, argan oil and panthenol. It allows for an immediate hydrating, nourishing and soothing effect.

Indicated for dry and dehydrated skin. Can be used as an enriched moisturiser.

Use: weekly D Post



Sensitive Skin Solutions



skin balance concentrate

Calming and reduces redness.

Improves the function of the microbiome.

Reduces free radical damage.

Hydrates and restore barrier function.

Sensitive, rosacea and post procedure skin.

Use: daily ☀️ 🌙 D S Post



fast skin repair

Enhances the recovery of the skin following in clinic procedures.

Moisturises and restores barrier function. Reduces redness and sensitivity.

Can be used daily to address sensitive skin.

Use: daily ☀️ 🌙 D S Post



couperend cream

Indicated for patients with couperose or rosacea prone skin.

Reduces visible redness, relieves sensitivity and strengthens capillary walls to prevent broken capillaries.

Use: daily ☀️ 🌙 C



melan recovery

Soothing and restoring post procedure balm.

Compromised post procedure skin.

Reduces the risk for post inflammatory hyperpigmentation.

Reduces sensitivity and enhances healing after procedures.

Use: daily ☀️ 🌙 D S Post



Sensitive Skin Solutions



anti-stress mask

Intensive mask that soothes and relieves skin from redness and sensitivity.

Counteracts the reactive characteristic of sensitive or damaged skin. Provides a comforting effect.

Enhances balance of the microbiome, essential to reinforce the skin barrier function.

INDICATED for the immediate relief of redness and sensitivity.

Use: occasional/weekly



Pigment Control Solutions



melan tran3x concentrate

Intensive depigmenting serum that acts on hyperpigmentation.

It regulates pigment production and improves existing hyperpigmentation.

Synergistic action with melan tran3x gel cream, providing continuous and gradual reduction of excess melanin.

Complementary to professional depigmenting treatments.

Use: daily



melan tran3x gel cream

Light weight gel cream indicated for skin with hyperpigmentation.

Should be used in conjunction with melan tran3x concentrate as a daily moisturizer.

Reduces the severity of hyperpigmentation and provides moisturizing and anti-inflammatory benefits.

Use: daily



Anti-Blemish Solutions



pure renewing mask

An intensive purifying mask.

Its unclogging, purifying and exfoliating action targets break-outs, excess shine and blemishes.

Its formula combines the mattifying action of white clay with regulating active ingredients and the mechanical action of plant exfoliants.

INDICATED for oily, acne prone skin.

Use: weekly



acne one

Improves the signs and symptoms of acne.

Unclogs the follicle to reduce blackheads, reduces excessive bacteria, reduces inflammation and prevents future breakouts.

Use: daily



imperfection control

Spot application for acne lesions and nodules.

Speeds up the healing process, reduces swelling and prevents post-inflammatory hyperpigmentation that remains after acne lesions have healed.

Use: localised



Peeling Solutions



glycorepair

Moisturiser indicated for the first signs of aging, or for individuals that have a dull skin.

Improves the natural exfoliation process and refines the pores.

Evens the skin tone.

Use: daily ☾ A N



resurfacing peel booster

Intensive exfoliating gel indicated for patients with milder forms of acne, occasional breakouts and blackheads.

To be used at night.

Enhances exfoliation and reduces excessive oil production.

Use: daily ☾ A N



brightening peel booster

Intensive exfoliating gel that reduces the appearance of milder forms of hyperpigmented lesions.

Ideal as a night time treatment for skin with environmental damage and great as a preparation for professional treatments.

Use: daily ☾ P N



ultimate micropeel

Liquid, enzymatic exfoliator indicated for sensitive skin, or younger skins with congestion.

Lightly exfoliates, reducing the build up of dead skin cells and improving radiance.

Use on a weekly basis to gently resurface the skin.

Use: weekly A

Global Anitaging Solutions



aox ferulic

Advanced anti-oxidant concentrate.

Protects against environmental aggressions.

Counteracts aging and enhances brightness.

Reduces pre-mature signs of aging.

INDICATED: for environmentally damaged skin, aged skin or for patients hoping to prevent the formation of wrinkles and dark spots.

Use: daily ☀ ☾ All



antiaging flash ampoules

Antiaging and anti-fatigue solution.

Antiaging shock treatment, immediate lifting effect.

More rested, brighter appearance.

Beauty treatment, immediately before make-up to improve skin finish.

INDICATED: as a primer for dull devitalized skin.

Use: daily/occasional ☀ ☾ All



proteoglycans ampoules

Moisturising, nourishing, repairing solution.

Firming action.

Provides tissues with elasticity.

Prevents the appearance of wrinkles and restores moisture to very dry skin.

Use: daily/occasional ☀ ☾ D



glycolic + E + F ampoules

Beautiful at home exfoliating ampoule with a dual resurfacing and moisturizing effect.

Enhances the production of natural moisturizing factors and improves radiance in dull, devitalized skin. Indicated for the visible signs of aging.

Use: weekly ☾ All



melatonin ampoules

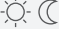
Powerful regenerating anti-ageing solution, boosting night repair mechanisms.

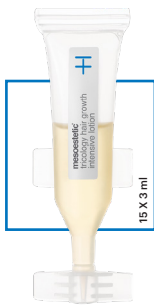
Use: daily ☾ All


Hair Care Solutions


tricology intensive hair loss shampoo

Anti-hair loss shampoo with revitalizing action.
Fights male and female androgenic alopecia.
Enhances blood flow and stimulates hair follicles.

Use: frequent 


tricology hair growth intensive lotion

Scalp lotion.
Anti-hair loss lotion, scalp revitalizing action.
Fights the multiple factors responsible for male and female androgenic alopecia.

Use: alternate days 


Photoprotection Solutions

mineral matt antiaging fluid

Antiaging fluid SPF 50+.
Shine-free, matt finish.
Protects and enhances type I collagen, counteracts photoaging.
Combines physical (UVB+UVA) and biological (HEV+IR) filters.
INDICATED: for oily and acne prone skin.

mesoprotech® complex

protection from UVA and UVB and oxidation caused by infrared radiation (IR) and visible light (HEV)


Photoprotection Solutions

light water antiaging veil

Moisturizing anti-aging sunscreen SPF 50
Enhances moisture in the skin and protects and enhances collagen production.
Counteracts photo aging. Liquid to powder formula.
Shake before use.


melan 130+ pigment control

Sunscreen developed specifically for hyperpigmented skin.
Doubles the minimum protection required in sunscreens by providing enhanced UVA and UVB protection.
Reduces visible pigmentation on the skin and protects against free radical damage.


sun protective repairing stick

A versatile sunscreen stick indicated for sensitive areas like the eyes.
Highly tolerable and water resistant, perfect after periocular treatments and for individuals that play sport.
Ophthalmologically tested for tolerance.


moisturising sun protection

Moisturising protector SPF 50+.
Moisturising properties.
Prevents trans-epidermal water loss.
Maintains optimum hydration level.

age element[®]



Brightening Solutions



age element brightening concentrate

Concentrated serum with brightening action.
Evens the skin tone and reduces melanin production.
Antioxidants prevents pre-mature aging.

INDICATED: Women with irregular pigment and milder signs of aging.



age element brightening cream

Treats the first visible signs of aging.
Multi-antioxidant action.
Evens the skin tone.

INDICATED: Women with irregular pigment and milder signs of aging.



age element eye contour

Reduces the appearance of dark circles.
Prevents visible signs of aging.

Protects the integrity of the delicate skin around the eye.
INDICATED: Women with irregular pigment and milder signs of aging.



age element brightening complex plus

4-week intensive brightening and antioxidant treatment.
Hydrates and revitalizes.

Improves epidermal barrier function.

INDICATED: Women with irregular pigment and milder signs of aging.

mesoestetic[®]


Firming Solutions

age element firming cream

Treats more advanced signs of aging.
Targets laxity and firms the skin.
Increases collagen and elastin levels.
Results in a smoother appearance.
INDICATED: Women with laxity, changing facial contours and more advanced signs of aging.


age element firming concentrate

Concentrated serum Boosts collagen and elastin production.
Firms the skin.
Has an immediate firming effect.
INDICATED: Women with laxity and more advanced signs of aging.


age element firming eye contour

Revitalizes and tightens around the eye area.
Ceramic applicator provides a cooling effect.
INDICATED: Women with signs of aging around the eye, particularly loose skin.


Anti-Wrinkle Solutions

age element anti-wrinkle cream

Retexturizes the skin.
Botox like effect.
Targets wrinkles at the root of the problem.
Smooths wrinkles.
INDICATED: Women with deep dynamic wrinkles and a loss of firmness.


Anti-Wrinkle Solutions

age element anti-wrinkle night cream

Retexturizes the skin.
Formula that enhances the skins natural regenerative properties at night.
Smooths wrinkles.
INDICATED: Women with deep dynamic wrinkles and a loss of firmness.


age element anti-wrinkle concentrate

Stimulates endogenous collagen production.
Renews damaged collagen fibers.
Volumizes and plumps the skin.
INDICATED: Women with deep dynamic wrinkles and a loss of firmness.


age element anti-wrinkle eye contour

Reduces signs of fatigue.
Reduces visible puffiness and dark circles.
Ceramic applicator cools the skin.
INDICATED: Women with deep dynamic wrinkles and a loss of firmness.


age element anti-wrinkle lip contour

Restores the lip volume.
Fills deep wrinkles around the perioral areas.
Plumps and moisturizes.
INDICATED: Women with deep dynamic wrinkles and a loss of firmness.



mesoestetic Pharma Group

committed to research and development
of new dermocosmetic solutions since 1984.

For more information about mesoestetic and its products, visit:

www.mesoestetic.co.za



@mesoesteticsa



@mesoestetic_sa

NOTE: This skincare brochure serves as a summary of the product or treatment and does not cover all the necessary information. Please consult your skincare professional for more detailed information prior to treatment. Ensure that a full medical history and skin analysis is completed to rule out all contra-indications not listed here. Results may vary.